



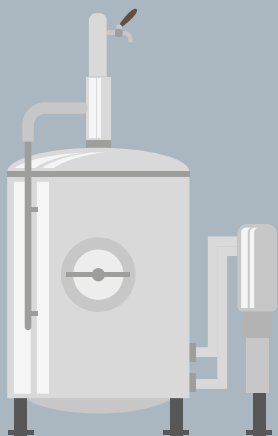
CONSOMMATION  
**7.567.122 hl**



2017  
**CHIFFRES-CLÉS**



EXPORT  
**15.808.903 hl**



NOMBRE  
DE BRASSERIES

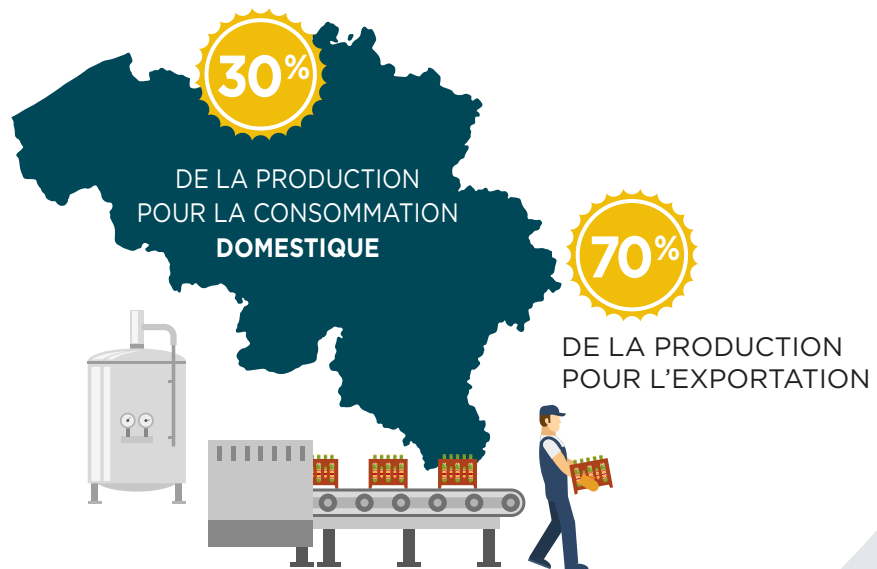
**261**

EMPLOI  
INDIRECT  
**49.000**

EMPLOI DIRECT  
(BRASSERIES UNIQUEMENT)  
**5.814**

INVESTISSEMENTS  
**284.482.000€**

PRODUCTION / EXPORTATION

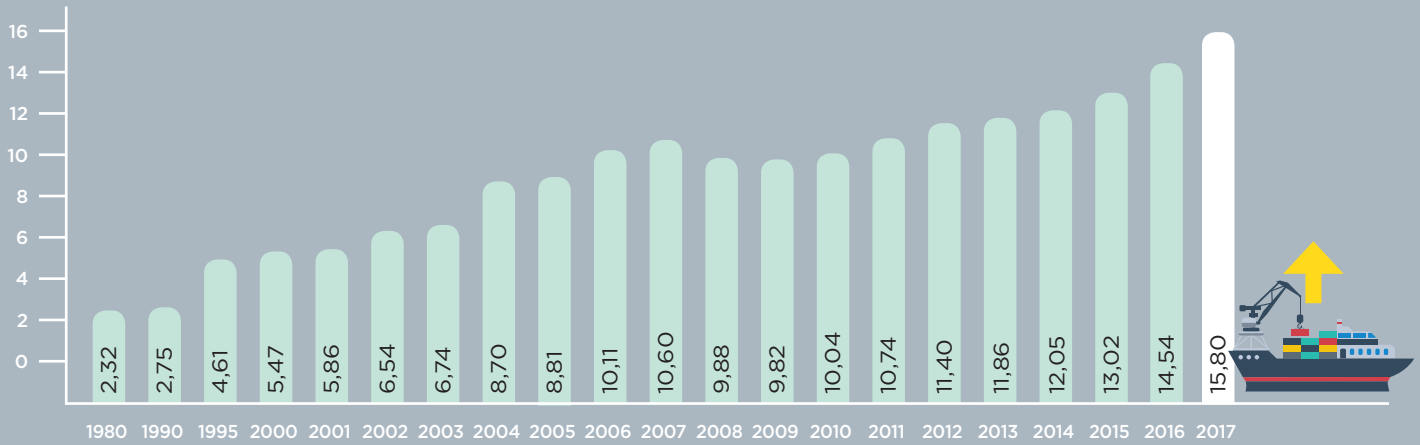




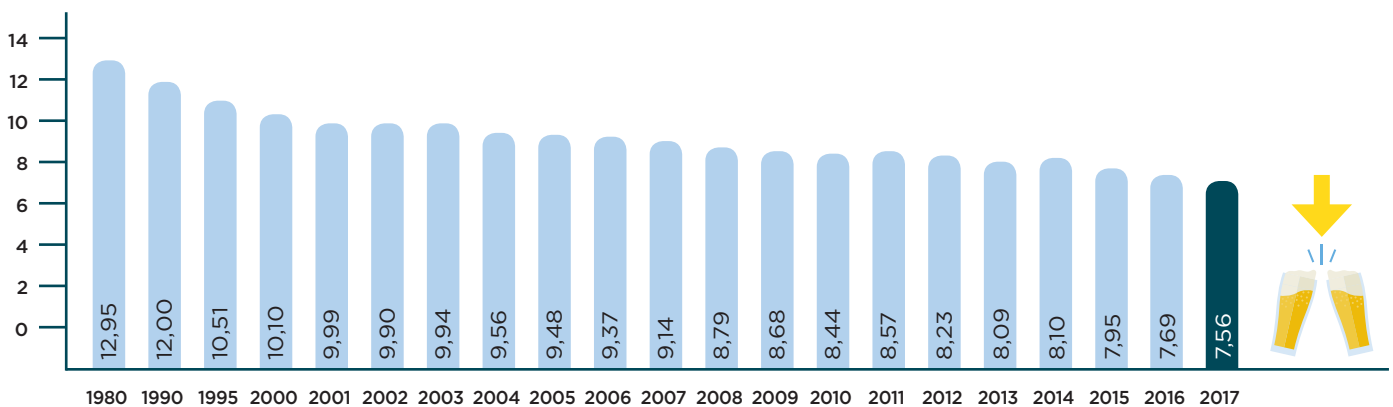
## EXPORTATION & CONSOMMATION DE BIÈRES BELGES

1980 - 2017 (en 000.000 hl)

### Exportation



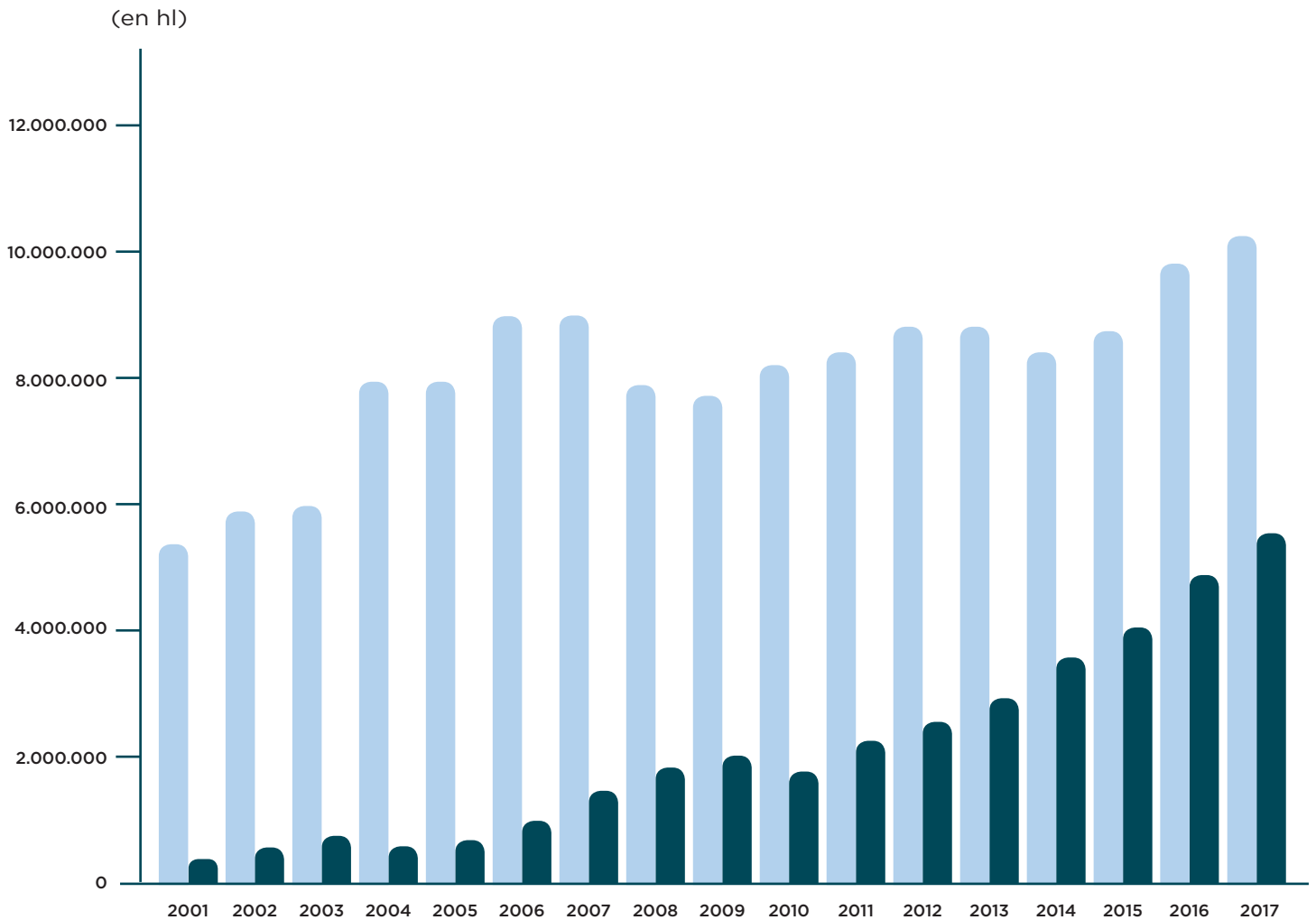
### Consommation





## EXPORTATION DE BIÈRES BELGES

Evolution Intra et Extra U.E.



extra U.E. 433.475

**+1184,50%**

5.567.805

extra U.E.



intra U.E. 5.423.495

**+88,80%**

10.241.098

intra U.E.



## LE SECTEUR BRASSICOLE BELGE

	en hectolitres 2016	en hectolitres 2017	Tendance
<b>Exportation</b>	14.539.000	15.808.903	<b>+8,70%</b>
<b>Consommation</b>	7.689.148	7.567.122	<b>-1,60%</b>

### CONSOMMATION DE BIÈRES EN BELGIQUE 1997-2017 (000 hl)

